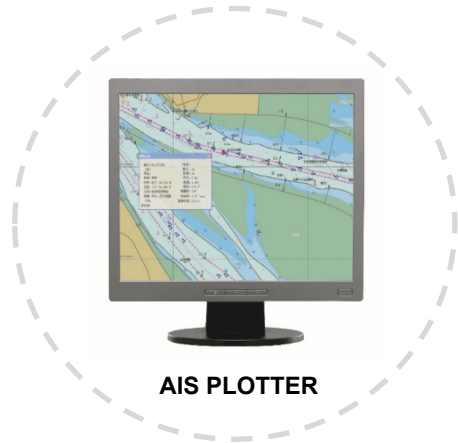


- Meet the ITU standards
- Professional AIS receiver
- Built-in isolated PSU with wide-range input
- High sensitivity and high reliability



**AIS RECEIVER**

- NAR-1000 AIS receiver is designed both for sailing vessels and land users.
- NAR-1000 contains two TDMA receivers. NAR-1000 can receive signals transmitted by other AIS transponders, including shipborne Class A AIS, Class B AIS, AIS AtoN station and AIS base station. NAR-1000 conforms to the international standards, such as ITU-R M.1371-5.



## SPECIFICATIONS

- Frequency Range: 156.025 ~ 162.025 MHz
- Default Channels: AIS 1, AIS 2
- Band Width: 25 kHz
- Sensitivity: -112 dBm
- Data Ports: RS232×1, RS422×1
- Data Format/Baudrate: NMEA 0183, 38400 bps
- Ant Connectors: 50 Ω, TNC (GNSS Ant), BNC (VHF Ant)
- Power Supply: DC 24 V (ground isolated) (12 V ~ 38 V)
- Size: 81 (H)×174 (W)×160 (D) mm
- Weight: 1.4 kg (Receiver)
- IP Grade: IP22 (Receiver, Plotter), IP66 (Antenna)

## EQUIPMENT LIST

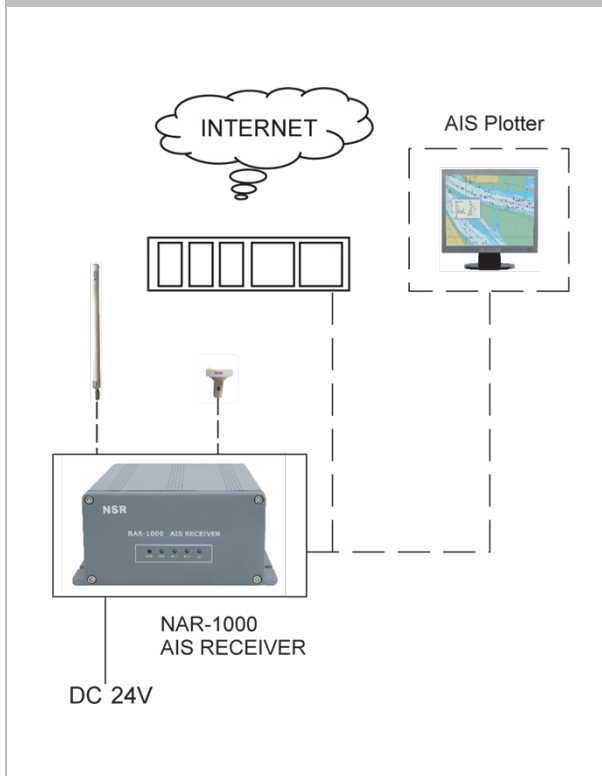
### ● STANDARD

- |                |          |       |
|----------------|----------|-------|
| - AIS Receiver | NAR-1000 | 1 pc  |
| - Accessories  |          | 1 set |

### ● OPTIONS

- |                             |        |      |
|-----------------------------|--------|------|
| - AIS Plotter               |        | 1 pc |
| - GNSS Antenna (with cable) | NGA100 | 1 pc |
| - VHF Antenna (with cable)  | NVA100 | 1 pc |
| - AC/DC Adaptor             |        | 1 pc |
| - TCP/IP Converter          |        | 1 pc |

## SYSTEM DIAGRAM



## SIZE DIMENSION

